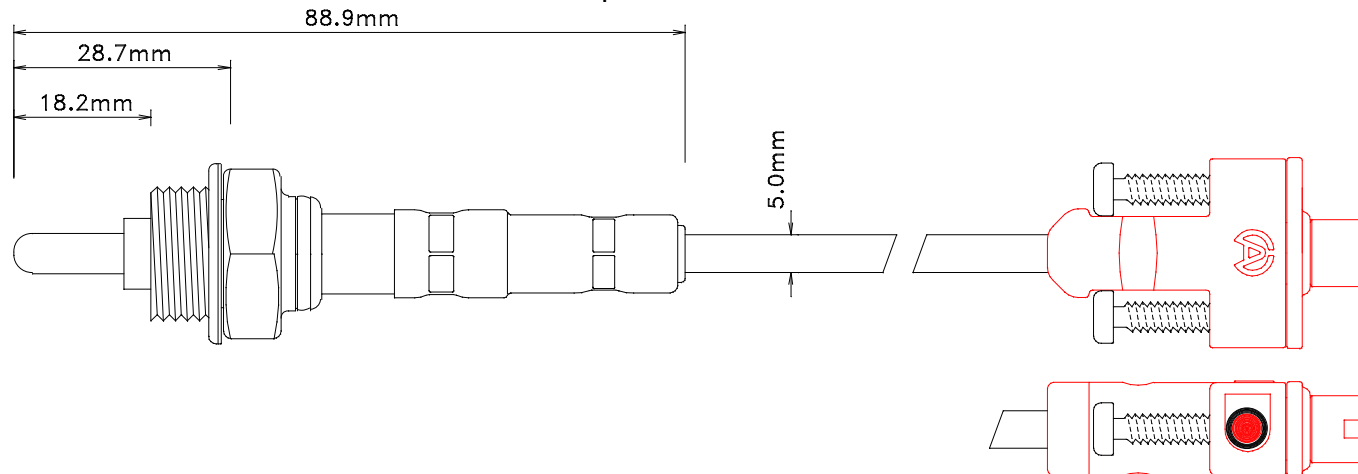




LAMBDA Sensor

Application : Measure the combustion fertility to the exhaust
 Maximum Temperature : 1.200°C / 2.192°F
 Length : **40cm / 15.7inch**
 Important note : This sensor must be used with a K type extension



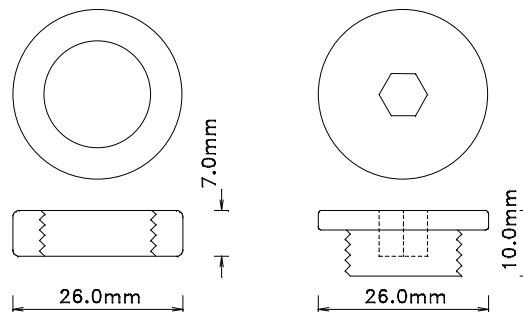
Connector : **Red**

Sticker : **Red**

Type : **Male**

Accessories supplied :

- 3 Nuts + 2 Let's plug



Extensions

A-371

L : 115cm (Karting, Motorcycle, Car)

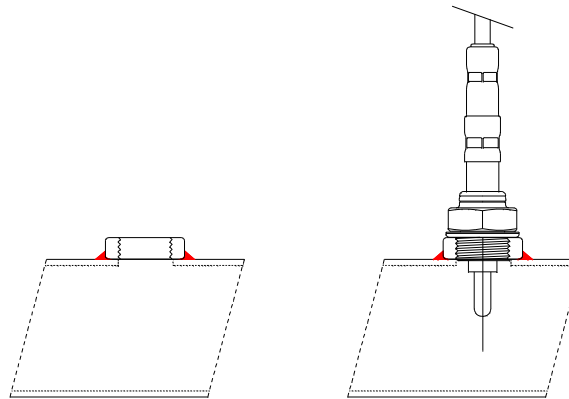
A-372

L : 250cm (Car)

Installation

The temperature sensor (EGT) must be positioned in the tube of exhaust at a distance of 150mm (5.9inch) from the engine exit.

- 1) Drill a hole of diameter 18mm (0.70inch).
- 2) Weld the nut supplied.
- 3) Fix the sensor with a flat key of 22mm (don't tighten too strong).

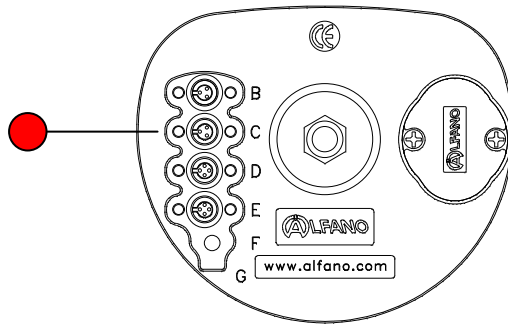


ATTENTION : When fixing, take care to move away the most possible the wire of this sensor from the other wires, mainly from the type : RPM, high tension of the ignition system wires, to avoid reciprocal interferences.

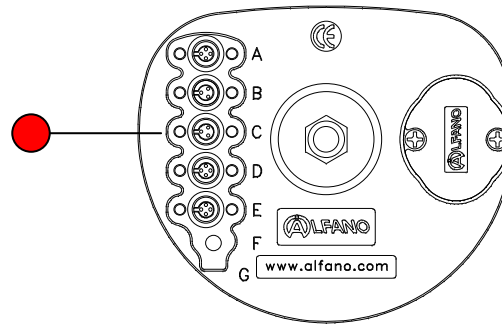
Adjustings

Attention : use exclusively the entry « C »

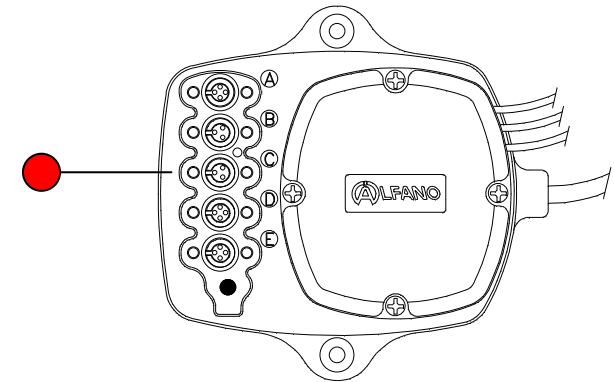
PRO+ LV / A-145



AStrO LV / A-155



AStrO fomula LV / A-165



We apply a method of continuous development. Therefore, we reserve the right to bring changes and improvements to all products described in this document, without preliminary notice. Consult our website regularly www.alfano.com in order to be informed of the last news and/or changes.